



ROANOKE VALLEY
CHRISTIAN SCHOOLS

Making Disciples of Christ

FAMILY-SCHOOL GUIDE 2021-2022

Mission Statement

Roanoke Valley Christian Schools makes disciples of Christ
in obeying the command of God
to train students in truth.

(Psalm 78:4-7)

ROANOKE VALLEY CHRISTIAN SCHOOLS

A ministry of Shenandoah Baptist Church
6520 Williamson Road * PO Box 7010 * Roanoke, Virginia 24019
(540)-366-2432 * (540) 366-9719 – Fax
E-mail: info@rvcs.info
www.rvcs.info

ADMINISTRATION

Mr. Rick Brown..... School Administrator
Mrs. Dinisha Fether..... Principal (K5 – Grade 6)
Mr. Eric Gutierrez..... Director of Recruitment and Advancement
Mrs. Annette Jones Preschool Director (K2, K3 & K4)
Mr. John Law..... Principal (Grades 7-12)/International Support
Mr. Tim Ragan..... Campus Pastor
Mrs. Dana Somers..... Athletic Director
Mr. Josiah Somers..... Assistant Athletic Director

TABLE OF CONTENTS

INTRODUCTION	3	LOWER SCHOOL ABSENT FROM SCHOOL ..	16
FOUNDATIONAL PRINCIPLES	3	UPPER SCHOOL ABSENT FROM CLASS.....	17
BIBLICAL MORALITY POLICY	3	WITHDRAWAL OF STUDENTS	17
LIFE PRINCIPLES.....	4	TARDINESS	18
GENERAL INFORMATION.....	5	LEAVING SCHOOL.....	18
THE SCHOOL OFFICE	5	VISITORS	19
TELEPHONE CALLS/E-MAILS	5	CONDUCT AND EXPECTATIONS	19
LOST AND FOUND	5	RESPECT/COURTESY.....	19
MEDICATION/STUDENT ILLNESS OR INJURY	5	SLANG	19
HEADMASTER PARENT PORTAL	7	OFF LIMITS	20
LOCKERS	7	GUM	20
ATHLETIC SPECTATOR GUIDELINES.....	7	STUDENT FUND RAISING.....	20
ANNUAL WORLD MISSIONS CONFERENCE ...	7	CELEBRATIONS	20
FINANCES	8	CAMPUS SAFETY	20
SCHEDULES.....	8	SCHOOL PROPERTY	20
THE SCHOOL DAY	8	PERSONAL PROPERTY	21
BEFORE AND AFTER SCHOOL.....	8	INTERNET USAGE.....	21
TEACHER ON CALL	9	RVCS COMPUTER USE POLICY.....	21
CHAPEL	9	DISCIPLINE PROCEDURES	22
7-12 REGULAR SCHEDULE	10	BULLYING POLICY.....	23
LUNCH PROGRAM.....	11	POLICY REGARDING CHEATING.....	24
TRAFFIC AND TRANSPORTATION	12	POINTS.....	25
TRAFFIC PATTERNS	12	DETENTION.....	25
STUDENT CARS.....	12	SUSPENSION AND EXPULSION.....	26
STUDENT CONDUCT.....	12	ALCOHOL, DRUGS, TOBACCO, VAPING, IMMORALITY, AND HARASSMENT	27
ACADEMIC INFORMATION	13	OTHER INFORMATION.....	28
REPORT CARDS.....	13	ANIMALS ON CAMPUS	28
HOMEWORK	13	INCLEMENT WEATHER	28
RETENTION	13	CRISIS MANAGEMENT PLAN.....	29
GRADING	14	RVCS CHANGE POLICY	29
GUIDANCE SERVICES.....	14	SCHOOL CALENDAR	30
SCHEDULE CHANGES.....	14	DRESS CODE	32
GRADUATION REQUIREMENTS	15	LOWER SCHOOL.....	32
FIELD TRIPS	15	UPPER SCHOOL.....	33
LIBRARY	16	SPECIAL OCCASION DRESS CODE	34
ATTENDANCE INFORMATION	16		

INTRODUCTION

Roanoke Valley Christian Schools (RVCS) was founded in 1973 as a ministry of Shenandoah Baptist Church under the leadership of Dr. Robert Alderman. RVCS is fully accredited by the Association of Christian Schools International (ACSI) as well as Cognia. RVCS is a member of the Virginia Association of Christian Athletics (VACA).

RVCS makes disciples of Christ in obeying the command of God to train students in truth. (Psalm 78:4-7) The process of making disciples is integrated in all components of campus life, including chapel, Bible class, devotions, service and Biblical worldview formation. RVCS seeks to develop students who imitate the heart and mind of Christ as they subject all areas of life to the authority of God's Word. These students are prepared to confront culture from a Biblical worldview. (Philippians 2:5)

Since the first graduating class in 1978, RVCS has graduated 1,317 students. Alumni have been accepted to a variety of universities after completing the college preparatory curriculum at RVCS. Other alumni have received appointments to military academies. RVCS expects graduates to display spiritual and moral growth, to exhibit personal and social development, to show signs of academic understanding, to reveal their desire to work with the home, to appreciate cultures of other peoples, and to understand the rationale for Christian education.

FOUNDATIONAL PRINCIPLES

BIBLICAL MORALITY POLICY

Roanoke Valley Christian Schools' Biblical role is to work in conjunction with the home to mold students to be Christ-like. Of necessity, this involves the schools' understanding and belief of what qualities or characteristics exemplify a Christ-like life. The school considers all applications on an individual basis and reserves the right, within its sole discretion, to refuse admission of an applicant or to discontinue enrollment of a student if the atmosphere or conduct within a particular home or the activities of the student are counter to or are in opposition to the Biblical lifestyle the school teaches. This includes, but is not necessarily limited to, living in, supporting, or condoning sexual immorality; practicing homosexual lifestyle, or alternative gender identity, promoting such practices; or otherwise having the inability to support the moral principles of the school. (See Leviticus 20:13a, Matthew 19:4-6 and Romans 1:27)

Roanoke Valley Christian Schools is committed to working with the local church. "Christ also loved the church, and gave Himself for it..." (Ephesians 5:25). "...And the gates of hell shall not prevail against it." (Matthew 16:18). Since Christ highly regarded the role and authority of the church, so shall RVCS.

Here is the link to the ministry's Statement of Faith - <https://rvcs.info/statement-of-faith>

LIFE PRINCIPLES

The Family-School Covenant verbalizes some of the basic principles that, if followed, will result in the maturity we are all seeking in the lives of our students.

RESPECT - An attitude that highly esteems those in properly placed authority

Parents, teachers, employers, governmental authority, and church leaders have been placed in our lives by God. We have a Biblical command to honor them because God says so, and it is for our own good. (Romans 13:1-7; Hebrews 13:7; 1 Peter 2:13-21; 1 Thessalonians 5:12-13)

OBEDIENCE – The outworking of the attitude of respect

We are to obey God and all those He has placed over us in our lives. When we obey, we show our love and respect for God and the authorities He has ordained. Our lives then will be long and fruitful as He has promised. (John 14:21; Ephesians 6:1-4; Romans 13:1-7)

DISCIPLINE – The correction that comes when we disobey

Discipline is a sure sign of love. Though never enjoyable at the moment, it later brings righteousness and peace. The goal is to have a life under control – self-disciplined by the Spirit of God as seen in Galatians 5:22-26. (Proverbs 3:11-12; Hebrews 12:4-13)

HOLINESS – A lifestyle that exhibits the fruit of the Spirit and flees from the acts of our sinful nature

Our standards are found in God's Word and our desire must be one with God and His holiness. (Galatians 5:16-26; 1 Timothy 2:22; 1 Peter 1:13-16; 2:9-10; 1 Corinthians 6:12-20; Proverbs 23:29-35; Philippians 4:8)

WISDOM - Understanding what is true and doing what is right in any situation

Wisdom comes from God and our respect for Him. It is developed in our lives by our proper response to correction. If we do not respond to correction with a teachable spirit, the Bible calls us fools and unable to attain wisdom. (Proverbs 1:7, 20-33, 2:1-22)

RESPONSIBILITY – Being trustworthy and accountable in all relationships and tasks

We are accountable to each other to love, encourage, confront, comfort, and forgive. Furthermore, initiative and excellence should be the marks of all tasks we attempt. (1 Corinthians 13; Matthew 18:15-17; Galatians 6:1-5; Ephesians 4:29-32; Ecclesiastes 9:10)

GENERAL INFORMATION

THE SCHOOL OFFICE

Office Hours: 8:00 a.m. – 4:00 p.m. (Monday – Friday)

All parents are welcome in the school. Please stop by the office first and receive a visitor's badge. Do not go directly to the classroom. Lunches, homework, books, and other items are to be left in the school office to be delivered to your child. If you wish to talk to your child's teacher please arrange for a private conference. Do not detain the teacher from his or her responsibilities to the class.

TELEPHONE CALLS/E-MAILS

To Faculty: It is our desire to work closely with parents by having on-going communication. It is also necessary to recognize that teachers have family and home lives and much work beyond school hours. For this reason, email is the preferred means of communicating with faculty. If you need to speak with a teacher we request that you call the office and leave a message for them to call you. If you call and do not hear from the teacher within 24 hours, please feel free to contact the respective principal/director. If it is necessary to call a teacher at home, please do so after 6:30 a.m. and before 9:00 p.m.

To the School Office: We recognize the need to take and deliver messages concerning *emergency needs* of students and parents which arise during school hours. In order, however, to be the best stewards of our time we would appreciate not having to deal with routine matters which could be handled outside the normal school hours. Your cooperation in this matter is greatly appreciated.

- Electronic devices are to remain in the "off" position for students beginning at 7:50 a.m. until 3:10 p.m. (This includes special features such as cameras, video recordings, text messaging, etc.) Permission to use a cell phone must be given. Some teachers collect electronic devices in their classrooms.
- Parents and others should not call or text students during school hours. All calls and messages are to be made from the school office. If abused, electronic devices will be confiscated and kept in the school office.
- ***No photos are to be taken by any device, in locker rooms or bathrooms. In addition, no inappropriate photos are to be taken at any school function. Consequences include confiscation of equipment and suspension.***

LOST AND FOUND

Articles left in the classrooms and halls, or playgrounds will be placed in the "lost and found" in the lower school building. After a reasonable time, unclaimed items will be given away.

MEDICATION/STUDENT ILLNESS OR INJURY

The clinic is equipped with one cot and medical supplies to administer first aid for students K2-12. Medications are kept in the clinic, with occasional exceptions in classrooms. **No** medications (prescription or non-prescription) will be administered unless it is accompanied by a completed "Permission to Administer Medication at School" form or a signed request giving permission for the school to administer the medication. These forms are to be completed at the beginning of **every** school year. If a child requires an antibiotic, ADHD medication, allergy/sinus medication, etc., it must be in the original bottle with the physician's name along with a signed parental consent to give the medication. First doses of all prescription medication must be administered at home. Several over-the-counter (OTC) medications will

be available through the clinic, listed on the "Permission to Administer Medication at School" form. It is not necessary to send in these listed medications.

Herbal/homeopathic medications will not be administered at RVCS without a written physician's order. Lack of safety information for these medications limits their appropriate use at school as they are not tested by the U.S. Food and Drug Administration.

To prevent exposing other students to illnesses a student should not come to school if he/she has the following symptoms.

1. Vomiting and/or diarrhea
2. An undetermined rash
3. A temperature of 100.4 degrees or greater within the past 24 hours
4. Any new onset of cold or flu-like symptoms (such as chills, aches, cough, shortness of breath, headache, sore throat) that cannot be attributed to another condition

In the event of a student illness or emergency, the school staff, after evaluating the student's condition, will contact the parents or the persons designated by the parents if it is determined that the student must go home. Students (grades 7-12) must sign out at the upper school office before leaving.

A child must have written permission from either a physician or the health department to return to school after hospitalization or after having chicken pox, measles, mumps, pneumonia, whooping cough, pin worms, scabies, ring worm, impetigo or a concussion. If a student (or immediate family member) has a confirmed case of COVID-19, please contact the school nurse for determination regarding the timeline for the student's return to school.

For students with an illness requiring an antibiotic, the parents are instructed that the student needs to be on the antibiotic and fever free without fever reducing medications for 24 hours before returning to school.

If it is unclear as to when a child should return to school following an illness, please call the school nurse at (540) 366-2432, ext. 144, to discuss.

The parent will inform the school within 24 hours or the next business day after his child or any member of the immediate family has developed any reportable communicable disease.

The clinic facilities are limited in space and are used by the entire student body. Parents are to:

1. Furnish the school with updated names and phone numbers of contact people (in addition to parents) as well as updated parents' work phone numbers.
2. Come promptly when notified of a student's illness or injury as facilities for keeping your child are limited.
3. Not request that we "allow a student to rest in the clinic for the remainder of the day." We cannot provide continuous care for long periods of time. When the school contacts the parents, the staff believes it necessary for the student to go home.
4. Notify the school of any changes to original medication orders during the school year.

In addition:

1. If your child is using rescue inhalers or other required medications it will be the parent's responsibility to keep these medications up-to-date.
2. Clinic personnel shall not administer medication doses higher than recommended safe in the *Physicians' Desk Reference (PDR)*. In such cases parents will have to come to the school to administer the medication.
3. Students diagnosed with severe allergic reactions requiring use of an Epi-Pen may possess and self-administer with a physician's written order sent to the school. An Emergency Action Plan (EAP) is required from the physician to be kept in the school clinic. This is updated yearly.
4. Students diagnosed with asthma requiring a rescue inhaler will be allowed to carry their inhaler and self-administer with a physician's order sent to the school. An Emergency Action Plan (EAP) is required from the physician to be kept in the school clinic. This is updated yearly.
5. All personal medications should be picked up by the last day of school. (i.e. inhalers, Epi-Pens, etc.)

HEADMASTER PARENT PORTAL

1. Lunch menu is available to pre-order lunch.
2. Homework assignments are available.
3. Report Cards and Progress Reports are available after each term for grades K5 - 12.
4. Directory of staff, students, and parents is available.
5. Portal will be closed for outstanding balances.

LOCKERS

Lockers are provided for all students in grades 5-12. No student should open another student's locker without permission. Locks are not permitted without administrative approval, except those issued for the gym lockers.

ATHLETIC SPECTATOR GUIDELINES

1. Be silent during prayer.
2. During the national anthem, focus on the flag with your hand over your heart and sing along as appropriate.
3. Cheer for RVCS. Be positive!
4. At appropriate times, make lots of noise with your voices, hands, and musical instruments. We should avoid anything which tends toward destructiveness or misuse of property, such as beating on the sides of the gym or banging on other objects carried into the gym.
5. Do not "boo" or make degrading remarks to anyone.
6. Pick up and properly dispose of your own trash.
7. The basic principles of dress code are still to be followed at athletic events – neatness, modesty, and appropriateness in keeping with a Christian philosophy of life.
8. Know your role ... athlete, coach, referee, or parent.

ANNUAL WORLD MISSIONS CONFERENCE

It is the policy of SBC that **no** other ministry events may be scheduled during the Annual World Missions Conference. This includes other ministries, as well as, athletic events and practices. Sports teams may not compete in events during the days of the conference. No exceptions will be made for any reason. This applies to anything other than the full day of RVCS classes on Wednesday and the missions conference activities/RVCS classes on the half days of Thursday and Friday. The conference for 2021 is scheduled for November 3 - 7.

FINANCES FACTS ACCOUNTS

RVCS has partnered with FACTS Management Group for all payments. This gives families access to their accounts 24 hours a day. FACTS has customer service representatives available to answer questions when the school office is closed. Upon student acceptance, all families are required to register for a FACTS account.

FACTS is also used to charge different types of fees throughout the school year through FACTS incidentals. A curricular fee will be charged to each family's FACTS account. This fee covers textbooks and other curricular related supplies. Students will only be charged extra for lost or damaged textbooks or materials. Other possible fees depend on students' involvement in different activities: lunch charges, athletic fees, music lessons, field trips, special class projects, etc. It is not possible to predict an exact amount for these different fees but every effort is made to keep these costs to a minimum.

An athletic participation fee is paid by each member of an interscholastic team.

For financial guidelines and more details regarding payments, late fees, delinquent accounts etc. Please go to www.rvcs.info and click on "Admissions Tab/Financial Information."

SCHEDULES

THE SCHOOL DAY

Before-School Care.....	6:50 a.m. – 7:50 a.m.
After-School Care	3:20 p.m. – 6:00 p.m.
Kindergarten (2s, 3s, 4s, and 5s – Half day)	8:30 – 12:00
Grades K2 - 6	8:30 – 3:00
Grades 7 - 12	8:30 – 3:10

Students normally are to arrive no earlier than 7:50 a.m. nor remain later than 3:20 p.m. The classrooms will not be open until after 8:20 a.m. It is the responsibility of parents to ensure that their student(s) report to the appropriate personnel upon arrival on campus. At day's end, the safeDISMISSAL program will be used through sixth grade.

BEFORE AND AFTER SCHOOL

K2-K4:

K2-K4 students are to enter the lower school building through the first-floor entrance (lower parking lot) immediately upon arrival and go to the designated preschool room of the week. If parents walk their children to the school building, it is requested that they make the **lobby door** their departure point. At 3:20 p.m., remaining students are taken to the after-school program; a fee will be charged.

K5-Grade 1:

K5-Grade 1 students are to enter the lower school building through the front door immediately upon arrival and go to the lower school library. If parents walk their children to the school building, it is requested that they make the **lobby door** their departure point. At 3:20 p.m., remaining students are taken to the after-school program; a fee will be charged.

Grades 2-4:

Students in grades 2-4 are to enter the lower school building through the front door immediately upon arrival and go to the cafeteria. At 3:20 p.m., remaining students are to go to the after-school program; a fee will be charged.

Grades 5-6:

Students in grades 3-6 are to enter the lower school building through the front door immediately upon arrival and go to the designated classroom. At 3:20 p.m., remaining students are to go to the after-school program; a fee will be charged.

Grades 7-8:

When students arrive at school they are to sign in at the upper school office then report to the specified classroom and remain until 8:20 unless given permission by the teacher on duty. Once on campus, a student is not to leave without school permission. Students must leave campus after school unless participating in or watching a sports event. Students may wait at the gym or the field for events starting by 4:30 p.m. At 3:30 p.m., remaining students should report to after-school program. ***Students are not to be in the gym without proper supervision, either before or after school.*** Otherwise, they must report to the after-school program.

Grades 9-12:

Students who arrive at school after 7:50 a.m. are to sign in at the upper school office and wait quietly in the hallway of the upper school building. Once on campus, a student is not to leave without school permission. Students must leave campus by 3:30 unless participating in or watching a sports event. Students may wait at the gym or the field for events starting by 4:30 p.m. At 3:30 p.m., remaining students are sent to after-school program. ***Students are not to be in the gym without proper supervision, either before or after school.*** Otherwise, they must report to the after-school program.

No students (any age) should be on the playground after school or during athletic events (3:30 – 6:00 p.m.) and during half days off and full days off from school when childcare is provided **UNLESS** they are enrolled in the before/after school care program. Before/after school staff have been instructed to ask students to leave when they show up on the playground.

Before, during, or after school, students are not permitted to play sports in the gymnasium and anywhere on campus (including outdoor basketball courts) without adult supervision (high school graduate, 18 years old or older).

TEACHER ON CALL

RVCS conducts a “Teachers on Call” program for students every Tuesday and Thursday from 7:50 am – 8:20 am. Students may use this time to get extra help from teachers, make up missed work, or discuss work to be missed for a planned absence. Teachers may invite your child to visit “Teachers on Call.” Parents may contact teachers to arrange for a student’s presence at “Teachers on Call.”

CHAPEL

Chapel is an opportunity for all the students within a level to be together. The living of a Christian life is stressed. Through special speakers such as missionaries and pastors the students are given the opportunity to develop a broader concept and to have a clearer understanding of an individual in the Lord’s work.

K2-K5:

Chapel is held weekly on Wednesdays at 9:15 a.m. in the auditorium.

1-4:

Chapel is held weekly on Thursdays at 9:50 a.m. – 10:20 a.m. in the auditorium.

5-6:

Chapel is held weekly on Thursdays at 9:00 a.m. – 9:40 a.m. in the auditorium.

7-12:

Chapel is held weekly on Thursdays at 10:35 a.m. – 11:35 a.m. in the auditorium.

To assure maximum benefit to all students, respect is to be shown during the chapel services.

7-12 REGULAR SCHEDULE

RVCS Grades 7-12 Regular Monday, Tuesday, and Friday Schedule			
Period	Grades 7-8	Period	Grades 9-12
1	8:30 - 9:30	1	8:30 - 9:30
2	9:35 - 10:20	2	9:35 - 10:20
SNACK	10:20 – 10:33	SNACK	10:20 – 10:33
3	10:35 - 11:20	3	10:35 - 11:20
4	11:25 - 12:10	4	11:25 - 12:10
LUNCH	12:10 - 12:40	5	12:15 - 1:00
5	12:45 - 1:30	LUNCH	1:00 - 1:30
6	1:35 - 2:20	6	1:35 - 2:20
7	2:25 - 3:10	7	2:25 - 3:10
Tuesday DETENTION	3:20 - 4:10	Tuesday DETENTION	3:20 - 4:10

RVCS Grades 7-12 Regular Wednesday Schedule			
Grades 7-8		Grades 9-12	
Period	Times	Period	Times
1	8:30 - 9:30	1	8:30 - 9:30
SNACK	9:30 – 9:43	SNACK	9:30 – 9:43
2	9:45 - 11:15	2	9:45 - 11:15
4 part A	11:20 – 12:10	4	11:20 – 1:00
LUNCH	12:10 – 12:40		
4 part B	12:45 – 1:30	LUNCH	1:00 – 1:30
6	1:35 – 3:10	6	1:35 – 3:10
DETENTION		3:20 - 4:10	

RVCS Grades 7-12 Regular Thursday Schedule			
Grades 7-8		Grades 9-12	
Period	Times	Period	Times
1	8:30 - 8:45	1	8:30 - 8:45
3	8:50 - 10:20	3	8:50 - 10:20
SNACK	10:20 - 10:33	SNACK	10:20 - 10:33
CHAPEL	10:35 - 11:35	CHAPEL	10:35 - 11:35
5 part A	11:40 - 12:10	5	11:40 - 1:00
LUNCH	12:10 - 12:40		
5 part B	12:45 - 1:30	LUNCH	1:00 - 1:30
7	1:35 - 3:10	7	1:35 - 3:10

LUNCH PROGRAM

A hot lunch program is available for all grades. Individual items may be purchased by students. As food costs increase during the year, lunch prices may be raised appropriately. Our lunch program is not subsidized by state or federal funds.

Each student will be assigned a code that the food services staff will use to charge lunches, snacks, a la carte items, when purchased. Students (grades 5-12) will have this code on a card. Parents are strongly encouraged to have their children use this program, however, cash will be accepted. If paying with cash, the student will take the money to the cafeteria to pay one of the food services workers. Lunch charges are billed monthly through FACTS.

Parents are **STRONGLY ENCOURAGED** to preorder on the HeadMaster parent portal the week before the preferred lunch is served. However, it **MUST** be ordered **no later than 6:30 a.m.** on the day of. Students can order in their homerooms for the items that they desire to purchase for that day.

Students, grades 5-12, can use cash or code when purchasing snacks (chips, drinks, fruit, etc.) during their snack break or regular lunch period. Students, grades 5-8, will be limited to purchasing one ice cream per day.

Generally, students should not go off campus with parents or guardians to avoid being tardy to classes after lunch. Exceptions may be made with administrative approval.

*Be mindful that several students have serious food allergies (nut, gluten, etc.). Any exposure may lead to a life-threatening situation; therefore, consider this as you bring food from home.

TRAFFIC AND TRANSPORTATION

TRAFFIC PATTERNS

For the safety and convenience of all involved, please observe the following guidelines for campus traffic:

1. **One way** traffic. During the peak traffic times of 8:00 – 8:30 a.m. and 2:45 – 3:30 p.m. **all** traffic for grades K5-12 should **enter ONLY from Williamson Road and exit ONLY ONTO Plymouth Drive or Dent Road.** Traffic for grades K2-K4 should enter from Dent Road and exit onto Dent Road.
2. Vehicles with students K2, K3, and K4 should use the drop-off and pick-up area to the south side of the lower school building (lower entrance of the Lower School Building). If parents wish to walk the students to the building, park in a marked parking space, not the drive-through. Be observant and drive slowly to make this area safe for the younger children.
3. Vehicles with students K5 - grade 6 should use the drop-off and pick-up area to the south side of the auditorium. Pick up in the afternoon begins at 3:00 p.m. Remain in vehicle during pick up time. Please be prompt.
4. Vehicles with a mixture of lower students (K5 - grade 6) and upper students (7-12) should wait until after 3:10 p.m. to enter the car line.
5. Vehicles carrying only students in grades 7-12 should arrive after 3:10 p.m. and use the gymnasium pick-up area.
6. Patrons of RVCS sporting events are not to park along Plymouth Drive, in the driveways of church-owned homes, on the street connecting the gym parking lot with Plymouth Drive, or in fire lanes.
7. Parents should not park in the drop-off and pick-up lanes and leave cars unattended. Park only in marked spaces.
8. The parking spaces in front of the maintenance garage and the Missions Apartment are for staff parking and should not be used by parents dropping off or picking up students. Also, please avoid blocking these spaces in afternoon pick-up.

STUDENT CARS

1. Annually, students must register (in the upper school office) all vehicles which they drive to school.
2. Cars are to be driven on the school grounds and access roadways at no more than **10 miles per hour** and are not to engage in any tire spinning or other improper driving.
3. No student shall be in or around the parking area except for arrival and departure without a car pass.
4. It is recommended that no student be allowed to ride with a student driver except by permission of the parents. Parents should refer to state law regarding teenage passengers in vehicles.
5. Student parking is provided on the north side of the worship center. Students are to park in a regularly designated parking space only. During mowing season, students should not park by grassy areas. Students are not to move their vehicles up to the parking area in front of the gym. Students, parents, and visitors are never to park along Plymouth Drive, in the driveways of church-owned homes, or on the street connecting the gym parking lot with Plymouth Drive.

STUDENT CONDUCT ON BUSES AND VANS

Students should **never** do the following.

- Start (warm-up) a bus/van.
- Sit in the driver's seat or touch any of the panel controls of a bus/van.
- Stand while the bus/van is moving.
- Hang arms out of windows of bus/van.

Students should do the following.

- Avoid walking in front of or behind the vehicle.
- Clean up trash before exiting vehicle.
- Keep noise to a minimum.
- Wear seat belts if provided.
- **Remember – Students’ behavior is a testimony to others “on the road.”**

ACADEMIC INFORMATION

REPORT CARDS

Report cards and/or progress reports will be available on HeadMaster for grades K5-12. Records, including transcripts, will be furnished only if all tuition and fees have been paid in full.

Progress reports will be sent out at the midpoint of each grading period. These reports are emailed to the parents of students (grades 3-12) who are doing below average work.

HOMEWORK

Because homework is an integral part of the school program, teachers are free to give homework to students to aid in their studies. Students are expected to successfully complete homework assignments on time.

Homework may be given for several purposes, such as drill and practice, creative activity, remediation, and for individual interests and needs. It is a wholesome, constructive activity designed to challenge and enrich the life and learning of every student.

There will be no homework assigned on Wednesday evenings with the underlying encouragement that school families participate in the mid-week services of their local churches.

RETENTION

If a student needs to repeat a grade, the teacher will do the following.

1. Contact the parent with concerns (meet in person if necessary). Notify the parent of this policy.
2. Share documentation with the parent.
 - Sample of student’s work
 - Samples of other students’ work (names not included)
3. File the student’s skill checklist that is included with the report card with the documentation. A student deficient in multiple skill areas will not be promoted to the next grade level.
4. Administer the entrance test for the next grade level if parents disagree with the skill checklist. The student must pass the test in order to advance to the next grade level.

GRADING

Academic grading standards for Kindergarten (K4, K5) and for Grade 1 (Bible):

O = Outstanding

S = Satisfactory

N = Needs Improvement

U = Unsatisfactory

Academic grading standards for Grades 1-12

Number Grade	Letter Grade	GPA
100	A+	4.00
99-94	A	
93-90	A-	3.70
89-87	B+	3.30
86-83	B	3.00
82-80	B-	2.70
79-77	C+	2.30
76-73	C	2.00
72-70	C-	1.70
69-67	D+	1.30
66-63	D	1.00
62-60	D-	0.70
Below 60	F	0.00
Honors classes receive an extra 0.50 of a point toward GPA/Advanced Placement or Dual Credit Classes receive an extra 1.00 point toward GPA.		

Assessment in Grades K4- grade 6 (Art, Music, and Physical Education)

Outstanding	5 Points	Student participated and cooperated with teacher and classmates
S+	4 Points	Student received a little encouragement or redirection
S	3	Student received some encouragement or redirection
S-	2 Points	Student needed to be reminded to stay focused and/or participate
Needs Improvement	1 Point	Student had some discipline and participation problems
Unsatisfactory	No Point	Student had to be removed from the activity/class

Grading standards of O, S, N, and U are also used in grades 1-4 in handwriting, conduct, and character development (spiritual, social, work habits). To qualify for honor roll (grades 2-6) grades of O and S are required.

GUIDANCE SERVICES

Each teacher offers spiritual and educational guidance. Our campus pastor, Tim Ragan, is available to counsel students as needed. One high school teacher, Kim Park, serves as the College and Career Guidance Advisor, aiding students and parents in post-graduate choices and processes. John Law, the upper school principal, assists students in scheduling classes and plans meetings to guide parents in the college process. Kim Park is designated as “school counselor” to complete college recommendations.

SCHEDULE CHANGES

The Upper School Principal must grant permission for class schedule changes. Please be aware that the following notations will be made on the permanent record regarding course withdrawals:

- No record – Withdrew before the end of the first two weeks
- WP – Withdrew after second week with passing grade
- WF – Withdrew after second week with failing grade

A withdrawal is allowed during the course of the year, before the final nine weeks. Withdrawals will be posted to transcripts but not computed in determining GPA.

GRADUATION REQUIREMENTS

Although counsel is available, the student accepts total responsibility for the proper arrangement of his courses to meet graduation requirements. All graduation requirements must be successfully completed before graduation. Behavioral requirements and commitments must also be upheld before a diploma will be awarded.

It is the policy of RVCS to grant credit for verified non-RVCS classes. The classes will count toward graduation requirements, but the grade-point average will not transfer to the student’s RVCS permanent file. Only classes taken at RVCS will be used to calculate GPA or class rank.

The following guidelines have been established to address the varied needs of students regarding graduation and to fulfill the school’s portion in partnering with Christian parents.

1. Standard Diploma
2. Advanced Diploma

RVCS Standard Diploma	RVCS Advanced Diploma
English 4 credits	English 4 credits
Math..... 3 credits	Math..... 4 credits
Science..... 3 credits	Science..... 4 credits
History..... 3 credits	History..... 4 credits
Health/ PE..... 2 credits	Health/ PE..... 2 credits
Bible..... 4 credits	Language..... 3 credits
Electives 4 credits	Bible 4 credits
Technology..... 1 credit	Technology..... 1 credit
	Electives 2 credits
TOTAL 24 credits	TOTAL 28 credits

RVCS advanced diploma required of any students who enter 9th grade with graduation credits

3. Certificate of Completion

A student will receive the certificate when classes have been modified, not receiving 24 credits.

Transcripts are always documented when students receive accommodations and/or modifications through the Resource Program.

FIELD TRIPS

When you enroll your child, you give your permission to have him/her go on field trips. These field trips are an integral part of the curriculum. Parents will be notified about the details of the trip such as place, departure/arrival times, and cost. An additional fee is usually charged through FACTS as an incidental payment. However, we do not want students to miss field trips due to finances. If timely payment is a problem, parents should contact the respective principal/director for special arrangements.

LIBRARY

As a ministry of Shenandoah Baptist Church, the libraries of Roanoke Valley Christian Schools serve as tools to honor Christ. RVCS strives to have libraries that are both academically and spiritually superior. The resources placed in the libraries are for the purpose of educational and recreational reading. A copy of the RVCS book selection policy may be obtained from the Main School Office.

K2- Grade 4

Students visit the library with their class. During this time, books may be checked out for two weeks. Kindergarten (K3, K4 and K5) and first grade students leave their books in the classroom and do not take them home. Students are responsible for lost or damaged books. If a student needs to use the library at another time other than the scheduled class time, arrangements will need to be made with the librarian and the classroom teacher.

Grades 5 -12

Students will have access to both the lower and upper school libraries. If the librarian is not available, they may check out books by neatly writing their first and last names on the book card inside the book and placing the card in the designated box on the card catalog in the upper school library or on the librarian's desk in the lower school library. Students may be brought to the library for special projects as the teachers deem necessary. Students are to work quietly in the library. Reference books are to be used in the library and not removed.

Students are responsible for lost or damaged books. All lost library materials (books, videos, CDs, DVDs, etc.) will be assessed a fine as follows:

- Paperback books: Cost of replacement
- All other materials: Amount determined on the age of the item and the cost of replacement

ATTENDANCE INFORMATION

LOWER SCHOOL ABSENT FROM SCHOOL

In order to keep accurate records and to emphasize the importance of school attendance, the following guidelines have been adopted:

1. Excused absences include illness, death of a family member or close relative, medical or dental appointments or an absence which has been excused by the principal's prior permission upon the request of the parents at least two days in advance. In lower school permission for up to two days' absence may be granted by the classroom teacher.
2. All other absences are unexcused.
3. Students out of school two to four hours will be counted absent one-half day. Students out over four hours will be counted absent the entire day.

4. (Grades 5-6) Any student absent from school will not be allowed to participate in a representative capacity in any other-school activity that day, unless his absence during the day was for a doctor's appointment or was pre-arranged with the principal and/or for some reason other than those stated in #1 above.

Promptness and regularity of attendance in school are vital parts of education and good preparation for work, personal life, and social life. A poor attendance record may hinder those seeking college or employment after graduation.

Lower school students (K5-6) whose absences exceed 20 days during one school year will not receive credit for the given grade without administrative approval.

Make-up and Advance Assignment Policy for Students (K5-6)

1. When five days or fewer are missed, the student will have twice the number of days he missed to make up the work. For example, if three days were missed, the student would have six school days to complete all make-up work. The number of days given for completing the make-up work does not include the weekends. However, such work is the responsibility of the student/parent, not the teacher. The make-up work will receive full credit unless it is turned in past the deadline stated above.
2. When more than five days are missed, the teacher, student, and parent(s) will need to work out a schedule that will give the necessary time needed to make up the work.
3. If a student misses school for family travel/vacation, the work that needs to be made up will usually be given after he/she returns from the trip. The time given to make up the work will be decided according to the above guidelines.

UPPER SCHOOL ABSENT FROM CLASS

An upper school student (7-12) who misses more than five class periods in a 9 week grading period will have 1 point deducted from the grading period average in that class for each absence above five. A student with more than 20 absences in a class for the year may not receive credit for that class. Unusual circumstances will be reviewed by the upper school principal upon parental request.

Make-up and Advanced Assignment Policy for Grades 7-12

1. Advanced assignment requests should be submitted to the school office two days in advance of the date desired.
2. Make-up assignments for a single missed day should be obtained from Headmaster.
3. If a student misses only the day a test is given or project or assignment is due, he is responsible to make up the work the first day he returns provided he was informed of the due date in advance of his absence. If a student returns to school on the day of a pre-announced test or quiz after a short absence, the student is expected to take the test or quiz on the day it is given. This includes athletes who are absent due to a game.

WITHDRAWAL OF STUDENTS

In order to appropriately process a withdrawal of a student during the school year, a two-week notice from parents is expected.

TARDINESS

Punctuality is a character trait that we are seeking to instill in our students at RVCS. The tardiness of one individual can disrupt an entire class. Parents are encouraged to assist in making sure that students are prompt in arriving and departing from school.

Lower School (Grades K2-6)

The classes begin promptly at 8:30 a.m., and all students should be in their classrooms and ready to begin their day at this time. Students who arrive after 8:30 a.m. will be counted tardy. If a student is tardy more than five times in a nine-week period, the parents will be contacted by the teacher. After the seventh tardy, the parents will be contacted by the principal.

TARDY TO SCHOOL

Upper School (Grades 7-12)

Students should report to the upper school office to check in before 8:28 a.m. or are considered tardy to school. Students are expected to be in first period before 8:30 a.m. After three tardies the upper school office will contact home. After six tardies to school, a conference with the principal and parent will occur.

TARDY TO CLASS

Upper School (Grades 7-12)

Students who are late to class during the day are to go directly to the class. A student is tardy for class if not seated in the proper desk at the beginning of class. (A student more than 15 minutes late is also counted as absent and, if unexcused, will have one point deducted from the current nine-weeks grade in that class.) Students will be given unexcused tardies unless they bring an excused tardy slip from the office or a teacher. Unexcused tardies per class per nine weeks will result in the following:

- 2 Reminder note to the student to be taken home
- 3 Detention
- 6 Loss of one point from the final nine-weeks grade in the class, detention and conference with the principal and parents.

LEAVING SCHOOL

If a student needs to leave school early for any reason, a written excuse from his/her parents or guardian is brought to the classroom teacher for lower school.

Students in upper school need to bring a written excuse from their parents to the upper school office by 8:25 a.m. Students in grades 7-12 must sign out when departing and must sign in at the school office when they return.

Any student leaving school premises without approval will be suspended. The permission to leave campus comes only from the principal and parents. A parent's permission for the year may be on file in the office and a student may receive permission from the principal to leave campus. Students must sign out when leaving and sign in when returning.

VISITORS

RVCS primarily has a “closed campus” policy. However, students wishing to have prospective students visit the school with them and parents or alumni wishing to visit classes or lunch period should receive approval from the principal at least one day in advance of the visit. The RVCS student making a visitor’s request should take the responsibility of acquainting the visitor with the standards regarding dress and conduct. All visitors must obtain a Visitor’s Pass from the office before beginning their visit.

CONDUCT AND EXPECTATIONS

RESPECT/COURTESY

Respect is one of the most important ingredients in any relationship. Relationships have been designed by God in part to bring us to Christian maturity. Proverbs 27:17 states, “As iron sharpens iron, so one man sharpens another.” Without mutual respect, there can be no lasting positive benefits in a relationship. Respect is needed between students and teachers as well as among the students themselves as each one is made in the image of God.

Disrespect serves to tear down the work of God in the life of the individual as well as the life and nature of the school. Disrespect should not and will not be tolerated whether in the form of talking back or “sassing” a teacher, willful disobedience, willful damage to another’s self-esteem, including unkind or derogatory remarks, racist/homosexual references/name calling/etc. or in the form of willful damage to property, including horseplay. Students will make other errors due to immaturity or forgetfulness, and these will be dealt with appropriately. However, disrespect will be handled swiftly and surely.

Courtesy is the rule in all relationships. The Apostle Paul says that “love...does not behave rudely,” (1 Corinthians 13:5) that is, it is mannerly. Let’s make this true at school in the halls, in the classrooms, on the athletic field, and on the bus or van.

Upper school students should remember that the buildings are being shared and courtesy to teachers and students, K2-grade 6, and to each other is expected. Talking in the halls should be in a quiet conversational tone. Loud talking, laughter, yelling, and horseplay are not permitted and will result in disciplinary measures being taken.

Students are to show courtesy to each other at all times. Adults are to be addressed as Mr., Mrs., or Miss – never by first names. Boys and girls should remove their hats, and sunglasses should not be worn inside a building.

Boy/girl relationships are not to include physical contact.

SLANG

The name of God and the name of Jesus are to be outwardly revered by all and never used in a careless/slang fashion. Crude language should not be used; it is unprofessional, and RVCS seeks to train students to be professional and God-honoring in their speech.

OFF LIMITS

Students are not permitted in the Teachers' Workroom without adult supervision. Students are not to disturb classes in session by looking in or waving in front of classroom windows or doors.

GUM

When students are finished chewing gum, it should be discarded in a trashcan. Chewing gum is a privilege which should not be abused. Gum occasionally shows up around campus and we wish to keep the buildings, furnishings, and grounds in nice condition.

STUDENT FUND RAISING

Students should not sell items within the school without prior clearance from their principal.

CELEBRATIONS

Birthday Celebrations (Lower School)

Parents enjoy having the classroom share in the celebration of their child's birthday.

- Parents should contact the teacher at least one day in advance.
- Refreshments are limited to cupcakes, cookies, etc., or buying ice cream for the whole class.
- Refreshments should be brought in the morning and left for the teacher to give out.
- No gifts or favors are to be brought or given to the class.

Birthday Invitations (or any other type)

Students may not distribute these during school hours unless everyone in the class is invited. "Everyone" will be defined as all of the boys, all of the girls, or the entire class (at least homeroom).

CAMPUS SAFETY

To ensure the physical safety of students and protect property from damage, activities such as snowball throwing, skateboarding, and rollerblading are not permitted. Students found disregarding this guideline before, during, or after school will be appropriately disciplined.

No guns or knives, fake or real, including squirt/water guns, are allowed on or off campus during any school activity. Students will be suspended or expelled if found with one of these items. Laser pointers are also prohibited for students.

SCHOOL PROPERTY

Roanoke Valley Christian Schools is God's property, having been provided by Christian people to provide Christian education. Respect, therefore, for the appearance and care of the buildings and grounds is expected of all students as a part of their Christian testimony. Students are expected not only to avoid littering and defacing the campus but also to actively help by picking up trash that someone else has dropped and to seek to prevent other people's defacing the property. Any student who disfigures property, breaks windows, does other damage to the buildings or equipment, or is part of a group that does, will be required to pay for damages or replace the item. If the damage is willful, discipline will also result.

PERSONAL PROPERTY

Students are to respect the property of other students. No student should enter another student's desk or locker. Students are urged to mark with their names items that they bring, especially in the younger grades. Items that are not permitted on school campus and at school functions will be collected by a teacher and may not necessarily be returned. Exceptions for some of these items may be made for field trips.

Students are discouraged from bringing valuables or large amounts of money to school. Electronics, glasses, and other personal items are the responsibility of the student, not the school.

Students leaving items in the gym must put them in their assigned locker, making sure it is **locked**.

To protect the safety and welfare of students and school personnel, RVCS has the right to perform unannounced searches and to seize contraband. The administrator and authorized staff members may search a student's pockets, purse, cell phone and other technology, backpack, gym bag, or other personal property; student lockers, desks, or other church/school property; or student automobiles. No student may possess any substance that constitutes a threat to the health, safety, or welfare of any persons on school property.

Monitoring the social media accounts of RVCS staff and students is not a regular administrative practice; however, at times, the school is made aware of issues arising on social media and will follow up. This notice is intended to inform you that there is no privacy on social media under common law and to advise you that the school can monitor public postings. Public and non-private postings are not protected regardless of any constitutional or common law principles.

INTERNET USAGE

Students are never to have access to the Internet without teacher supervision and a signed "Internet Usage Policy" form. This also applies to the use of wireless technology.

RVCS COMPUTER USE POLICY

RVCS has been richly blessed in the area of computer hardware and software. This blessing also brings an increased responsibility to use computers wisely. Biblically, this means using computers honestly and ethically. The world's standard for handling computer software is not God's standard. We must guard ourselves against the "everybody's doing it" mentality.

Built into our system are the principles of trust and honesty. Therefore, the following rules apply:

1. Account access is to be confidential at all times. No student should ever access another's account for any reason. Passwords are to be confidential. Failure to abide by this standard could result in loss of computer access and immediate withdrawal from computer class.
2. Student work is to be considered personal and is not to be copied or printed for another student's use.

Regarding use of all computers at RVCS, no computer is to be used for:

1. Copying copyrighted software; this is not only dishonest, but it is illegal.
2. Importing programs from outside the school.

The campus computers are off limits for playing games. Games may not be brought from home to play on school computers. Students may be given a detention if they do not comply. Violations of the above rules will be treated like any violation involving dishonesty and cheating.

Files are to be used by the student who creates the files. They are never to be used by any other student for any reason. Using or viewing any other student's work will be treated the same as using that work for one's own purposes.

Personal devices must be turned off unless a teacher grants permission. In upper school, permission to play games is never given.

DISCIPLINE PROCEDURES

The teacher is to make a clear determination as to whether a behavior is inappropriate. Once this determination has been made, the following steps will be taken:

1. First Offense:

- a. The teacher will counsel with the student and help him evaluate his inappropriate act. He will be allowed to express his own viewpoint in a proper manner.
- b. The Biblical principle will be discussed and the teacher will pray with the student.
- c. The student will be given a warning.
- d. Parents will be contacted for more serious offenses.
- e. Disciplinary action may occur with parent contact.

2. Second Offense:

- a. The teacher will counsel with the student and help him evaluate his inappropriate act. He will be allowed to express his own viewpoint in a proper manner.
- b. The Biblical principle will be discussed and the teacher will pray with the student.
- c. Disciplinary action will be taken at this point. The teacher may take away a privilege, etc.
- d. Parents will be contacted.

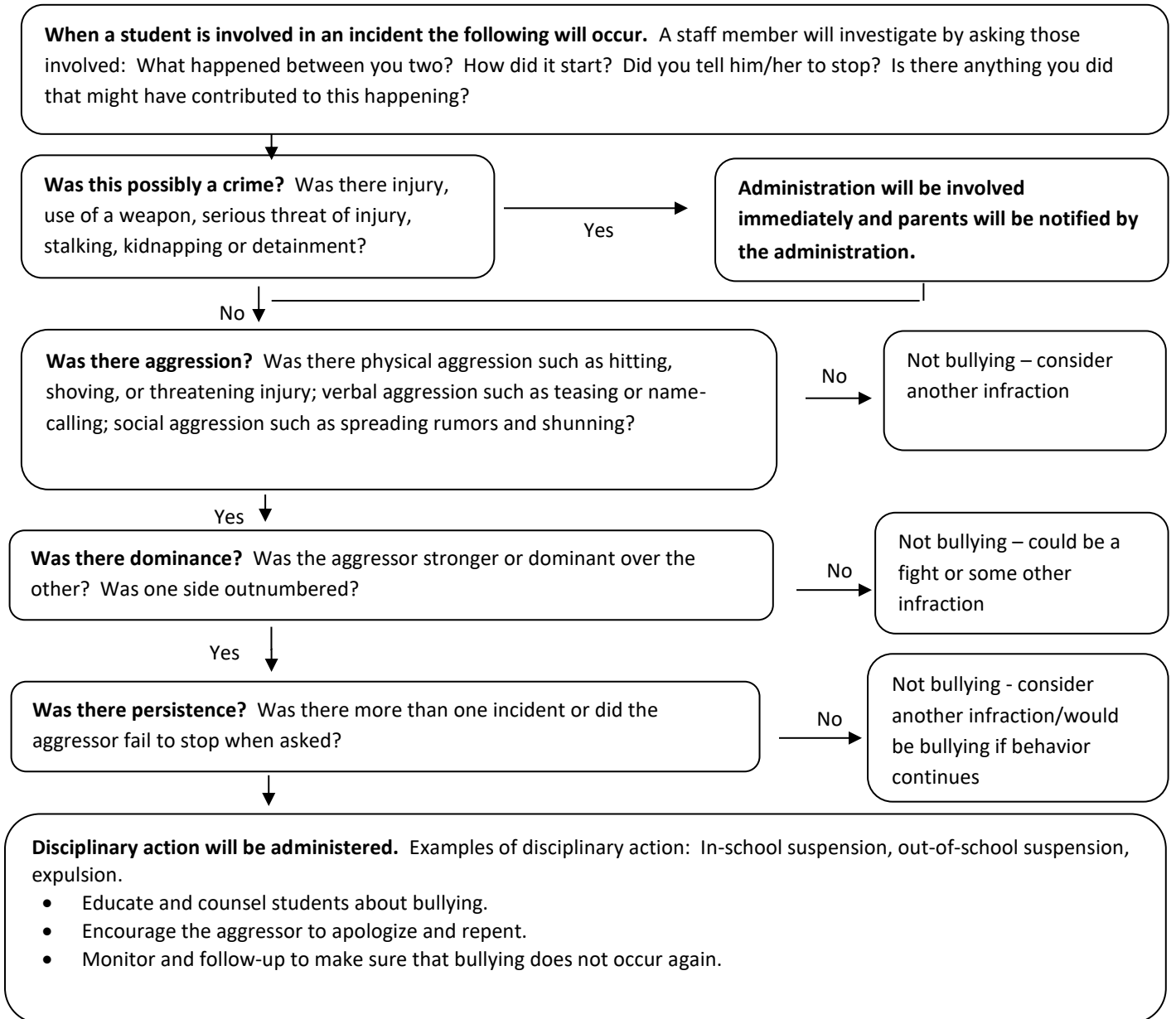
3. Third Offense:

- a. The teacher will counsel with the student and help him evaluate his inappropriate act. He will be allowed to express his own viewpoint in a proper manner.
- b. The Biblical principle will be discussed and the teacher will pray with the student.
- c. Disciplinary action: The principal will contact parents and determine with them an appropriate response for the benefit of the student.

BULLYING POLICY

Harassment or bullying of a student(s) by other students or any member of the staff is contrary to the schools' commitment to provide a physically and psychologically safe environment in which to learn. Virginia legislation defines bullying as "any aggressive and unwanted behavior that is intended to harm, intimidate, or humiliate the victim; involves a real or perceived power imbalance between the aggressor or aggressors and victim; and is repeated over time or causes severe emotional trauma. 'Bullying' includes cyber bullying. 'Bullying' does not include ordinary teasing, horseplay, argument, or peer conflict." (Code of Virginia § 22.1-276.01)

BULLYING ASSESSMENT FLOW CHART



POLICY REGARDING CHEATING

1. DEFINITION –

- Cheating is both lying and stealing. It is lying because you give the impression of knowing or doing what you do not know or have not done. It is stealing because it is taking from someone else. (synonyms: fraud, deception, dishonesty)
- Cheating is not just taking but using another student's work when expressly told to work individually (this includes parental help as well).
- Concerning parental help – the parent should show the children the difference in how to arrive at an answer as compared to actually doing the work for them.
- One who aids in cheating is as guilty as the one who accepts another's work or help.
- Cheating is **not** situational – there are definite boundaries. God's Word gives the principles. (Exodus 20:15; Proverbs 20:17; Ephesians 4:28; James 4:17)

II. EXAMPLES OF CHEATING

- **RECEIVING** answers during a quiz or test in any way – orally, copying from another student, or looking at any other source containing answers. Looking on another student's paper or at any other source of information for that subject during a testing time is considered cheating whether you change your answer(s) or not.
- **GIVING** answers during a test or quiz, either orally or by intentionally allowing another student to copy them.
- **OBTAINING** test or quiz questions and/or answers in advance through unauthorized means. (A person giving someone else access to these is also guilty of cheating.)
- **ALTERING** of or filling in of answers, either the student's own or another's, when grading tests or quizzes in the classroom.
- **HAVING** another student's homework, test, quiz or workbook without permission by the teacher of that subject to do so.
- **COPYING** of homework answers. Students may occasionally be encouraged or permitted to "work together" either within or outside the classroom. Even then students should only help each other, not simply give/receive answers. ***(If there is any doubt about the appropriateness of this, the teacher of that subject should be consulted.)***
- **PLAGIARISM** is borrowing someone's ideas, information, or words without citing the source or citing the source, but paraphrasing the source too closely, without using quotation marks to indicate that words and phrases have been borrowed.
- **NOT HAVING** totally completed work but giving the impression of having done so.
- **MOBILE STORAGE DEVICES** containing any assignments are to be used only by that student. They are **NEVER** to be used by any other student for any reason. Having another student's storage device in your possession is cheating.
- **COPYING** assignments from a storage device or a computer for another student is cheating.

III. CONSEQUENCES OF CHEATING

- A. If “nobody else” knows -
 - Loss of fellowship with God
 - Loss of respect for one’s self (personal dignity)
- B. If “caught” cheating –
 - Loss of trust in relationships
 - Loss of clean reputation
 - Loss of points academically – suspension, etc.

POINTS

When a student is out of dress code, a dress code point will be issued. Upon accumulation of three dress code points, a detention will be issued for disobedience.

When a student doesn’t sign in, a sign-in point will be issued. Upon accumulation of three sign-in points, a detention will be issued for irresponsibility.

DETENTION

A detention system is used in grades 7-12 as a means of correction, unless specified otherwise in this handbook, for infractions of school rules and standards.

Detentions can be served after school on Tuesdays or Wednesdays.

1. Each detention lasts from 3:20 – 4:10.
2. A detention must be served on the day designated by the teacher. An additional detention may be given each time a student misses this date.
3. The student and his parents are responsible for working out any transportation needs.

Procedure for serving a detention:

1. All students report to the detention room by 3:20 p.m.
2. Bring a Bible, pen, and paper.
3. No talking is allowed during detention, except to the teacher.
4. Students must work only on the assigned work stated below.
5. The 50 minutes are to be used for making a written response to an appropriate set of questions. The questions are to be written on the essay along with the responses.
6. Turn in the completed essay to the teacher-on-duty who will forward it to the issuing teacher.
7. The issuing teacher reads the completed essay and discusses it with the student, as needed.
8. The approved essay is then sent to the parents. Essays that are not approved (improper form, content, etc.) must be rewritten after consultation with the teacher and/or principal.

Additional detentions may result in the following consequences:

<u>Detentions per Year</u>	<u>Consequences</u>
2	Conference with the respective principal
3	Conference with parents and the respective principal
4	Conference with parents, respective principal, and Associate Pastor for School Ministries
5	Suspension for one day
6	Suspension for two days
7	More days of suspension or expulsion

SUSPENSION AND EXPULSION

Attendance at Roanoke Valley Christian Schools is a privilege with certain responsibilities. Students represent RVCS 24 hours a day. As representatives of a Christian school, students represent Christ and are responsible to glorify Him in all aspects of life (I Corinthians 10:31). It is vital that students' conduct be above reproach and honoring to Christ and to the reputation of RVCS on and off school grounds including participation in social media, internet sites, blogs, and text messaging.

RVCS students that are involved with any conduct identified below will be treated in a way that is designed to discipline and disciple (Galatians 6:1, 7; Proverbs 10:17; 12:1; Revelation 3:19). Each situation will be reviewed on a case-by-case basis with alcohol, drugs, tobacco, vaping, immorality, or harassment (sexual, racial, or personal) reviewed according to the principles from a separate section.

Parents are strongly encouraged to monitor apps and internet sites their children use. Posting, reposting, liking, or visiting sinful or immoral content on any social media or internet site is inappropriate. Students will face consequences for these activities as well as inappropriate use of technology. Examples are bullying, sexting, taking photos in a locker room or bathrooms with any device, or taking inappropriate photos at any school function. The electronic device used may be confiscated.

Students will face consequences for the following: un-Christian language, entertainment, or behavior (including cursing, profanity, attendance at rock concerts, school dances, NC-17 and R-rated movies, or nightclubs, gambling, cheating, fighting, stealing, lying), defacing school or personal property, possession of weapons on school property, or leaving school without permission. The consequence may be suspension or expulsion from RVCS. (The items listed are not intended to be a complete listing but a sampling.) Some conduct may be referred to the RVCS School Committee and local law enforcement.

When a student chooses to violate the life principles with conduct leading to suspension, the following consequences will occur. Grace will be extended to students who demonstrate true repentance by confessing before being discovered. Decisions for optional consequences will be based on the student's repentance (I John 1:9; Proverbs 28:13). A student who "causes other students to sin" will receive more consequences (Matthew 18:6).

1. All academic work missed for out of school suspensions must be made up within the normal framework of time, as outlined in "Make-up Work for Absences."
2. For each day of suspension, two points shall be deducted in **every** subject from the student's current quarter's grade.
3. Determination will be made by the principal and parents whether the student will serve the suspension in school or required to stay at home on days of suspension. Attendance at extra-curricular events on days suspended will be determined at the time of suspension.
4. Members of the Student Senate will immediately withdraw from office for the balance of the school year and may not be allowed to hold office the following year (I Corinthians 9:27).
5. The student may be required to do some in-school or out-of-school research and service.
6. The student may be required to ask forgiveness for the wrong committed before the student body or a group of peers (Matthew 5:23-24).
7. The student will be on restorative care for ten weeks following a suspension.

8. Athletes who are suspended have the following consequences during the season of the suspension.
 - a. Athletes will not be allowed to participate in upcoming games and perhaps for the remainder of the season. The minimum number of games missed would be based on the number of games played during the athlete's season.
 - I. For a season of 15 scheduled games or less, the athlete would miss at least 1 game.
 - II. For a season of 16 scheduled games or more, the athlete would miss at least 2 games.
 - III. Athletes may be allowed on the bench in upper school dress code during home games from which they are suspended.
 - b. Athletes serving as captain or co-captain will withdraw from service.
 - c. Athletes who are dropped from a team will not be awarded a letter or a certificate.

Upon suspension or expulsion of a student, the administration may give the rest of the student body an appropriate statement regarding the basic nature of the offense and purpose of discipline. This action will be designed to:

1. Protect the reputation of student(s) involved from what conclusions others might draw if gossip were the only channel of information.
2. Solicit prayer for those involved.
3. Reinforce the clarity of the schools' position regarding the type of behavior in question.
4. Serve as a warning to other students.

Expulsion will result in the severing of ALL academic, extra-curricular, and athletic relations for the current school year. Any fees paid in advance will be subject to forfeiture.

ALCOHOL, DRUGS, TOBACCO, VAPING, IMMORALITY, AND HARASSMENT

RVCS students who are involved with alcohol, drugs (use of illegal or misuse of legal), tobacco, vaping, immorality, or harassment (sexual, racial, or personal) will be disciplined in a way that is designed to discipline and disciple (Galatians 6:1, 7; 5:19-21; 2 Timothy 2:21-22; 2 Corinthians 7:1; 1 Corinthians 6:19). Each situation will be reviewed on a case-by-case basis; however, the minimum discipline for a student's first-time involvement of the above-mentioned will be a mandatory, three-day suspension. Depending upon the circumstances of discovery and participation (involving other students, affecting other students, refusal to repent, dishonesty, etc.), a student's involvement could result in additional days of suspension or an expulsion.

This policy is designed with a desire for the student's restoration, which begins with the student's repentance and honesty regarding the circumstances of the involvement (Galatians 6:2; Psalms 32:1). With parents' contribution, a program of accountability and responsibility will be established for repentant students who are suspended. The suspended student will be required to attend discipleship sessions as approved by the school's administration (Proverbs 27:17). The suspension carries with it a deduction of six points from each subject's grade for the current grading period as well as the other consequences of suspensions. RVCS is committed to restore repentant students to prevent a second occurrence of this behavior. A second offense, anytime within the student's enrollment at RVCS, will result in immediate expulsion (Proverbs 22:10).

OTHER INFORMATION

ANIMALS ON CAMPUS

- A. Animals should be in the classroom by teacher initiation. (The animals should not be shared in other classrooms unless invited by the teacher.)
- B. Animals should be related to the curriculum.
- C. Animals should not be included in "show and tell."
- D. Animals should not be in carpool line. This leads to an unsafe situation.

INCLEMENT WEATHER

If inclement weather forces a closing of school, an announcement will be made over the local television stations and via SchoolCast. If emergency weather conditions occur during the day, an announcement will be made on the television stations and via SchoolCast. Closing of school will be announced over the following stations:

WDBJ - Channel 7

WSLS - Channel 10

Realizing that road conditions differ from place to place, parents are always free and responsible to make whatever decision they feel is in the best interest of safety for their family.

Kindergarten Information (K2, K3, K4, and K5, half-day):

When Roanoke Valley Christian Schools opens 1 hour late, there will be half-day kindergarten from 9:30 until 12:00.

When Roanoke Valley Christian Schools opens 2 hours late, there will be half-day kindergarten from 10:30 until 12:00.

CRISIS MANAGEMENT PLAN

Roanoke Valley Christian Schools has developed a Crisis Management Plan and the plan is available for your perusal in any of the school offices. The staff and faculty have been trained to implement this plan in the event of a crisis and the plan is under continual review. Drills provide practice for a majority of crises.

Implementing the plan may require that the school evacuate to other premises using ministry buses and vans, and staff and student vehicles. By signing the signature page, the parent gives the school permission to transport his/her student/students to a safe location. The two possible locations are New Life Christian Ministries and Faith Alliance Church. Parents will be informed via SchoolCast messages.

RVCS CHANGE POLICY

While every attempt has been made to cover the most common issues at school, this handbook is not exhaustive in its contents. Furthermore, school policies are subject to change. As policies change, communication will be initiated.

Several items which might interest you can be found on the website at www.rvcs.info/schoolguide . They are:

- Information regarding accreditation
- Vision statement
- Biblical worldview statement
- Educational philosophy
- Overall objectives
- Class pre-requisites
- Statement of faith
- Parent-Teacher Christian Fellowship
- Parent-teacher conferences
- Volunteer Program
- Supplementary Learning Program
- School insurance
- Athletics
- Exemption from licensure for preschool classes
- After school locker room directives
- Financial information
- Family and referral scholarships
- Student pictures and yearbook
- Physical Privacy and Sexuality Policy
- and much more.

RVCS admits students and does not discriminate on the basis of race, color, national or ethnic origin.

SCHOOL CALENDAR

Roanoke Valley Christian Schools 2021-2022 School Calendar for Parents and Students PLEASE NOTE - THIS CALENDAR IS SUBJECT TO CHANGE

August

- 16 Classroom Visitation 1:00-3:00 pm
- 18 First Day of School - ½ Day of School
- 19-20 Senior Retreat
- 20 ASVAB (Vocational Testing for 11th graders)
- 23-27 Vision Screening Grades 1-6
- 24 Back-to-School Night 7:00 pm

August

M	T	W	T	F
2	3	4	5	6
9	10	11	12	13
16	17	18	19	20
23	24	25	26	27
30	31			

September

- 02, 03 Volunteer Meeting
- 06 No School: Labor Day
- 13 Inspirational Calendar Sales Begin
- 15 Progress Report (Grades 3-12)
- 23 Yearbook Chapel
- 27 Financial Aid Meeting
- 29 Student Senate Retreat

September

M	T	W	T	F
		1	2	3
6	7	8	9	10
13	14	15	16	17
20	21	22	23	24
27	28	29	30	

October

- 04-08 Spiritual Emphasis Week
- 11 No School: Parent-Teacher Conferences
- 11-16 VACA MS/JV Regionals
- 13 PSAT
- 18-23 VACA Varsity Regionals Volleyball/State Soccer
- 19 End of 1st Grading Period
- 19-22 School Pictures
- 21, 22 Volunteer Meeting
- 25 Tax Credit Meeting
- 26 Report Cards
- 29 Rusty Snyder Memorial Golf Tournament

October

M	T	W	T	F
				1
4	5	6	7	8
11	12	13	14	15
18	19	20	21	22
25	26	27	28	29

November

- 04-05 ½ Days of School: SBC/RVCS Missions Conference
- 11, 12 Field Trip – 11th and 12th grades
- 11, 12 Field Trip – 9th and 10th grades
- 12 7th & 8th Grade Field Trip
- 19 Talon Tipoff
- 19 Thanksgiving Baskets for Staff
- 22-23 Educator’s Conference – No School
- 24-26 Thanksgiving Holiday– No school

November

M	T	W	T	F
1	2	3	4	5
8	9	10	11	12
15	16	17	18	19
22	23	24	25	26
29	30			

December

- 01 Progress Report (Grades 3-12)
- 07 Picture Make-Up Day
- TBD K4- Grade 5/Speech & Drama/Ensemble - Christmas Program
- 16 Christmas Chapel – Parties 1:30/2:00 (K4 – Grade 4)
- 17 Total School ½ Day
- 17 Christmas Parties for Grades 5-12
- 20 Christmas Break

December

M	T	W	T	F
		1	2	3
6	7	8	9	10
13	14	15	16	17
20	21	22	23	24
27	28	29	30	31

January

- 03 School Resumes
- 13,14 Volunteer Meeting
- 14 End of 2nd Grading Period
- 17 MLK Day/No School
- 18 New Student Pictures
- 21 Report Cards
- 27 - 29 Men's Prayer Advance
- 28 Teacher Work Day - No School
- 31-2/4 Spirit Week

January

M	T	W	T	F
3	4	5	6	7
10	11	12	13	14
17	18	19	20	21
24	25	26	27	28
31				

February

- 04 Superlatives
- 05-12 VACA MS/JV Regionals
- TBD Yearbook Sales Begin
- 12-19 VACA Varsity Regionals
- 14 Valentine's Day Chapel - Parties following (K2 - Grade 4)
- 17 Progress Report (Grades 3-12)
- 18 Math Olympics (RVCS Only)
- 21-26 VACA State Tournaments
- 24 In-School Open House 9:00 am-Noon
- 28 - 04 Senior Trip

February

M	T	W	T	F
	1	2	3	4
7	8	9	10	11
14	15	16	17	18
21	22	23	24	25
28				

March

- TBD Spiritual Emphasis Week
- 22 End of 3rd Grading Period
- 24 - 26 Women's Prayer Advance
- 25 Teacher Work Day - No School
- 27 - 29 Reaccreditation Visit
- 30 Report Cards

March

M	T	W	T	F
	1	2	3	4
7	8	9	10	11
14	15	16	17	18
21	22	23	24	25
28	29	30	31	

April

- 01 Spelling Bee (RVCS Only)
- 04-08 Standardized Testing
- TBD Fine Arts Fanfare
- 05 ACT
- 08 JR/SR Formal
- 15 ½ Day of School - Grandparents Day
- 18-22 No School: Easter/Spring Break
- TBD Staff Appreciation Day/Luncheon
- 29 Progress Report (Grades 3-12)
- 30 Eagle Express 5K

April

M	T	W	T	F
				1
4	5	6	7	8
11	12	13	14	15
18	19	20	21	22
25	26	27	28	29

May

- 20 Upper School Library Closed for Inventory
- 27 Memorial Day Chapel
- 29 Baccalaureate 6:00 pm
- 30 Memorial Day/No School
- 31 ½ Day of School

May

M	T	W	T	F
2	3	4	5	6
9	10	11	12	13
16	17	18	19	20
23	24	25	26	27
30	31			

June

- 01-03 ½ Days of School
- 02 Awards Assembly (grades 9-12)
- 02 Preschool Graduation
- 03 Last Day of School - ½ Day of School
- 03 Graduation 8:00 p.m.
- 03 Grades 5-8 Awards Assembly 8:45 a.m.
- 03 K5-Grade 4 Awards Assembly 10:30 a.m.
- 03 End of 4th grading Period (K2-Grade 12)
- 03 Report Cards Issued K2 - Grade 6
- 09 Report Cards (Grades 7-12)

June

M	T	W	T	F
		1	2	3
6	7	8	9	10
13	14	15	16	17

DRESS CODE

Rationale: The RVCS School Committee desires to make disciples of Christ as RVCS obeys the command of God to train students in truth. Students are requested to dress in a manner that enhances the reputation of the Gospel. With institutional preferences in the areas of neatness and appropriateness, students are requested to demonstrate a heart condition of humility as they abide by these guidelines which are interpreted and applied by the RVCS faculty.

LOWER SCHOOL DRESS CODE FOR K2-GRADE 6

The School Committee has approved a dress code that is intended to promote modesty, neatness, and appropriateness for a school environment, including all school events. It is important to remember that conformity to any dress code does not make a person a Christian or more spiritual than another. The simplified and flexible code seeks to complement the educational process. Clothing should be clean, in good repair, with no holes, cuts or tears. Clothing should not be excessively large or overly tight.

Any clothing or accessory may not contain references to alcohol; drugs; tobacco; vulgarity; derogatory remarks; violence; suggestive diagrams, pictures, words or slogans that may be interpreted as offensive; gang-related or other trademark that advocates illegal behavior.

Shirts/Tops

*Students may wear t-shirts, tops, and shirts. Sleeveless shirts must cover the shoulder completely. Tank tops and spaghetti straps are not permitted.

*Students may wear sweaters, pullovers, vests, jackets, coats and hoodies.

Pants/Shorts/Skirts

*Students may wear pants, jeans, capris, and knee-length shorts/skorts made of material permitted for other pants.

*Girls may wear skirts and dresses that are knee length. No sundresses, please.

*Low-rise, skinny, stretch, leather-like, sweat pants and wind pants are prohibited. Pants that are form fitting may be worn with fingertip length tops.

Accessories

*Students must wear athletic shoes and socks on the days of physical education. Because of daily recess, children are encouraged to wear shoes that allow for running and playing on the playground.

*All head coverings and sunglasses should be removed while indoors.

*Visible tattoos or body piercings (other than girls' earrings) are prohibited.

School Spirit Fridays

*Students are encouraged to wear an RVCS-purchased Spirit t-shirt on Fridays.

A Special Note for Children in Grades K2-K5

Children may wear comfortable clothing that meets age-appropriate needs (potty-training, dressing independently). All other guidelines regarding lower school dress code apply.

**UPPER SCHOOL
DRESS CODE FOR GRADES 7-12**

The School Committee has approved a dress code that is intended to promote modesty, neatness, and appropriateness for a school environment, including all school events. It is important to remember that conformity to any dress code does not make a person a Christian or more spiritual than another. The code seeks to complement the educational process and support the goal of preparing students for real-world standards. Clothing should be clean, in good repair, with no holes, cuts or tears. Clothing should not be excessively large or overly tight.

Any clothing or accessory may not contain references to alcohol; drugs; tobacco; vulgarity; derogatory remarks; violence; suggestive diagrams, pictures, words or slogans that may be interpreted as offensive; gang-related or other trademark that advocates illegal behavior.

Shirts/Tops

Girls may wear blouses, tops, and shirts that are not form-fitting. Cleavage should not show at any time. Sleeveless shirts must cover the shoulder completely. Tank tops, see-through tops and spaghetti straps are not permitted.

Boys may wear dress shirts, collared polo shirts, and collarless shirts.

Boys and girls: No midriff or undergarments should show at any time.

Pants/Bottoms

Girls may wear pants, jeans, capris, and knee-length skirts and dresses.

Boys may wear pants and jeans that fit to the waist.

Athletic, sweat, and leather-like pants are not permitted. Pants that are form-fitting can be worn with fingertip length tops.

Accessories

Boys and girls should wear safe shoes.

Boys' hair and facial hair are to be neatly groomed. Hair should be above the collar and no longer than mid-ear.

***Boys and girls** will remove head coverings and sunglasses while indoors. Visible tattoos and body piercing (other than girls' earrings) are prohibited.

All matters of dress code cannot be covered and require responsibility on the part of parents and students. It is expected that parents and students will work together beforehand at home to avoid any dress code conflicts at school. Students out of code will receive unexcused absences from class until they change into clothing that meets code. Final decision rests with the school staff. After three infractions, a detention will be issued.

SPECIAL OCCASION DRESS CODE
Superlatives, Senior Trip, Junior/Senior Formal

1. As always, modesty is the key principle in the selection of formal wear.
2. Dresses must have two 1" straps. Halter style dresses are considered "strapped" dresses and are acceptable if they are modest. Toga ("Helen of Troy") dresses are permissible due to the modest neckline.
3. Necklines should be high enough so that cleavage is not shown.
4. The back of the dress must not be lower than halfway down the back.
5. Side cutouts are not permitted.
6. Dress length must be knee length or longer.
7. Dresses must not be tight or form-fitting (hugging the body).
8. Young men should wear a suit and tie or tuxedo as this is a formal event.
9. Visible body piercings and/or tattoos are not permitted (other than girls wearing earrings).
10. If your date does not attend RVCS, you are responsible to provide them with these guidelines well in advance of the event.
11. Please submit two photos (front and back of dress) to the junior class sponsor at least two weeks before the event.

Dress code points will be issued to students who are not in code. If you are out of this dress code, you may be denied admittance until you change into something that meets the dress code requirement.

Baccalaureate and Graduation

All graduates will wear red caps and gowns for the Baccalaureate and Graduation ceremonies. Dress code exceeds school dress code. Other students serving during Baccalaureate and Graduation or receptions must exceed the weekday school dress code. Boots, jeans and athletic wear, which may be worn during school hours, are not acceptable for these formal occasions

Dress code points will be issued to students who are not in code. If you are out of this dress code, you may be denied admittance until you change into something that meets the dress code requirement.

For all occasions, if you are in doubt about your attire, do not wear it.